



Root 2 Disease –
the root of evil

SDS SWISS DENTAL
SOLUTIONS®

swissdentalsolutions.com

Every dead tooth can be the reason of disease: Information about severe health risks caused by root-treated teeth

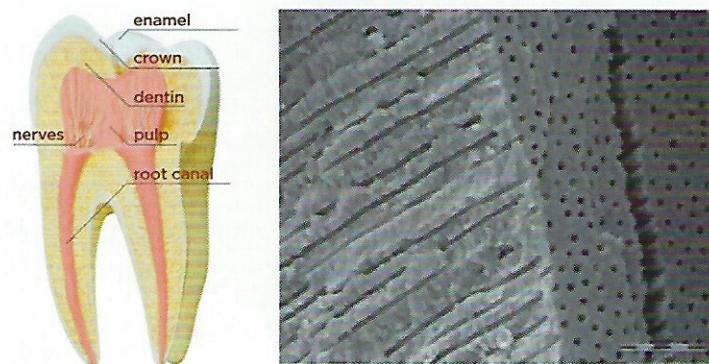
- Since decades chronic inflammatory diseases, as well as so-called auto immune diseases increase in all developed countries considerably - in many cases the cause is unclear.
- Doctors and dentists who think/act holistically experience clear improvements of these diseases if root-treated teeth and other interference zones in the oral cavity are strictly removed and if the immune system is strengthened.
- Each year about 8 million root-treatments are performed in Germany.
- Is the mouth really reflecting general health?
- Where does this relation come from?
- The answer is easy: pathogenic bacteria and highly toxic bacterial metabolites.



Scientific Background

How are teeth involved in the origin of chronic diseases?

Root-treated teeth are dead teeth. Even the most perfect micro-endodontic treatment will not be able to realize a perfectly bacteria-proof sealing of the treated root. Accessory side canals and the endo-paro connection through dentinal tubules will always remain. The dead tooth, originally an organ with its own nerve- and blood supply remains as a dead tooth stump in the oral cavity. It will be populated by various, partly unknown species of anaerobic, pathogenic bacteria which degrade remaining organic tissue and secrete harmful metabolic products (toxins).



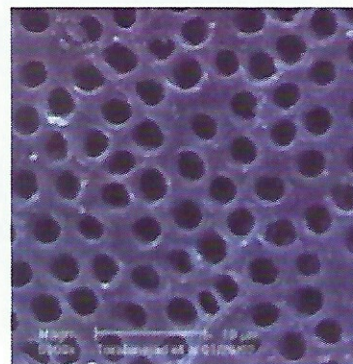
Which bacteria lurk in the dead tooth?

In a study of Siqueira et al. micro-organisms were detected in all endodontically treated teeth with apical inflammation, suggesting a chronic infection. If an inflammation of the root apex can be recognized in the X-ray, the failure rate of a root-treatment is increasing clearly based on the chronic infection.

Richardson et al. identified 75 different bacterial strains in root-treated teeth with apical osteitis. These bacteria can be found particularly often in and around dead teeth: enterococcus faecalis, capnocytophaga ochracea, fusobacterium nucleatum, leptotrichia buccalis, gemella morbillorum and porphyromonas gingivalis. Four of these abovementioned species affect the heart, three the nervous system, two kidneys and brain, one the maxillary sinus.

Toxins

These pathogenic bacteria produce as secondary products of their anaerobic metabolism highly toxic and potentially cancer-causing hydrogen sulfides (Thioether/Mercaptan) from the amino acids cysteine and methionine. By irreversible inhibition of the active center of many endogenous vital enzymes these toxins can become the cause of varied systemic- and organic diseases. The inhibition of important enzymes of the respiratory chain of mitochondria has been proved in vitro. Every chewing process releases these bacteria and above all their toxins into the lymphatic system of the surrounding tissue. From here they reach the bloodstream (focal infection) and the entire organism.



Immune response

The vital, healthy pulp (as part of the immune system) plays a crucial role in the defense of these bacteria. Often a chronic infection originating from bacterial colonization of the pulp leads to a chronic inflammation of the surrounding bone, the immune system is activated permanently. Macrophages activated by non-specific immune reaction release so called inflammatory mediators (TNF-alpha, IL-1, growth factors, prostaglandin (PGE2) and leukotriene) which circulate in the bloodstream. These inflammatory mediators favor the development or deterioration of chronic inflammations and autoimmune diseases. In addition, TNF-beta producing T-lymphocytes are stimulated. TNF-beta is suspected of promoting chronic diseases, as well as cancer. It is proven that TNF-beta increases the risk of postmenopausal breast cancer.

T. Rau at the Swiss Paracelsus clinic was able to demonstrate a clear correlation between breast cancer and teeth. He found that more than 95 % of his breast cancer patients had root-treated teeth in one or several teeth of the stomach meridian, in contrast to 35 % with healthy patients.

Diagnostics

What are interference fields?

The „interference field“ concept in the human organism assumes that an inflammatory process in a particular region of the body can cause a reaction in another area of the body or can lead to therapy resistance (chronification). The **classical interference field diagnostics** performed by dentists is the assessment of X-ray pictures/clinical findings and their allocation to medical findings of the respective treating field.

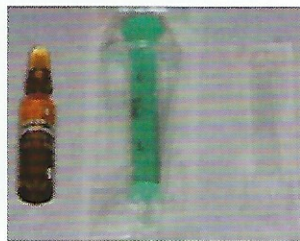
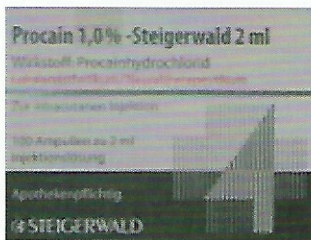
Interference field diagnostics

Teeth belong to the most important subsystems within a network of self-regulative parts of the organism. Teeth and their related periodontium (= odonton) are linked to other physical structures and organs. Odonton was coined a term by Reinhard Voll: he identified the direct and close interactions between odontons and various areas of the body.

X-ray diagnostics/clinical diagnostics

Neural therapy: test injection with 1 % procaine:

in principle, the injection creates a sort of temporary restart for the respective region. By using the viscerocutaneous reflex the brain is stimulated to pay more attention to this body area, the potential interference field is disconnected from its corresponding organ for a certain amount of time. In addition, procaine is broken down by enzymes into two components (PABA and diethyl amino-ethanol), causing a reinforced blood circulation and vascular formation in the related area, as well as the stabilization of nerve cell membranes by a normalization of their action potential.



Patients are asked to observe all subtle changes in their physical conditions after the injection for about 24 hours. Often a so called “second phenomenon” (Huneke) is triggered. Particularly the shoulder arm syndrome shows spontaneous improvement. The effect should continue for about eight hours to identify the suspected tooth as a clear interference field. The anesthesia itself is of short duration and mostly ends after about 30 minutes.

Therapy

Extraction

Many root-treated teeth present some kind of inflammation of surrounding tissue, effectively diagnosable by a DVT scan (three-dimensional X-ray picture). The cyst at the root apex is nothing but a kind of capsule formed by the immune system around the infected area to protect the body from this area. Highly toxic teeth ankylose frequently with the surrounding bone. Local metabolism comes to a stop - similar to a prison, the body immures the tooth. The only possibility to escape this chronic intoxication is the surgical removal of these dead teeth, as well as of inflamed or cystic tissue. Residue-free curettage of soft bone is mandatory. Next step is the ozone disinfection of remaining tissues.

According to Brisman et al., the placement of implants next to still existing root-treated teeth has to be evaluated thoroughly to avoid a possible failure by focal infection.

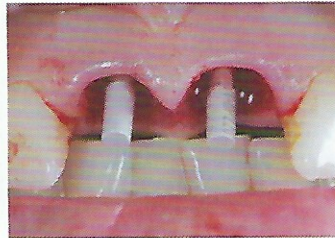
Perfect aesthetic and immunological solution: ceramic implants made from zirconia (zirconium dioxide)

Zirconia is an electrically neutral ceramic, highly biocompatible and without any interference field characteristics. In contrast to greyish titanium it is metal-free and highly aesthetic by its white color.

Zirconia implants combine best biocompatibility with perfect aesthetics.

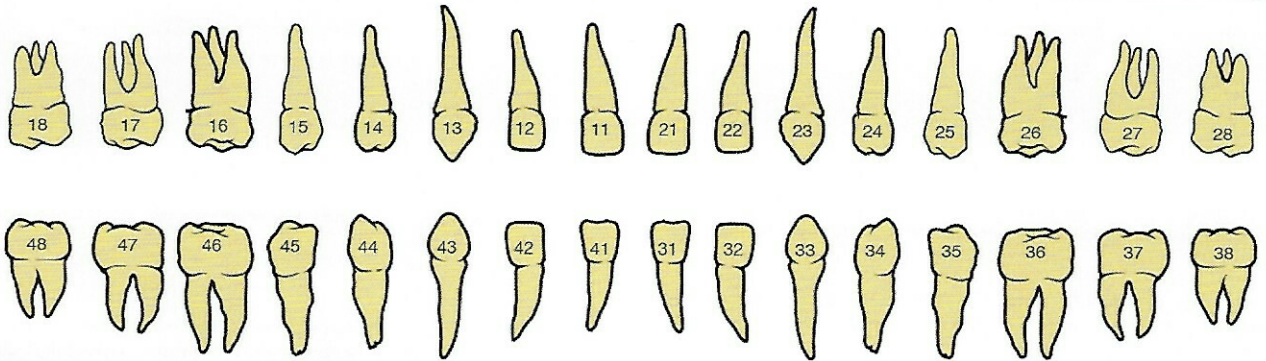
Recently zirconia implants are also available as two-piece screw retained implants for all indications.

Experience has shown that immediate implantation with one-piece zirconia implants is the best treatment solution for single-root teeth.



Meridian System for Self-Assessment

SENSORY ORGANS	inner ear	tongue/taste	nose/olfactory sense	eye	nose/olfactory sense/frontal sinus	nose/olfactory sense/frontal sinus	eye	nose/olfactory sense	tongue/taste	inner ear
JOINTS	shoulder elbow	jaw	shoulder elbow	rear knee	hip	sacrum-coccyx	rear knee	shoulder elbow	jaw	shoulder elbow
	hand ulnar foot plantar toes	anterior knee	hand radial foot big toe	foot			foot	hand radial foot big toe	anterior knee	hand ulnar foot plantar toes
SPINAL CORD SEGMENTS	Th 1 C8 Th 7 Th 6 Th 5 S 3 S 2 S 1	Th 12 Th 11 L 1	C 7 C 6 C 5 Th 4 Th 3 Th 2 L 5 L 4	Th 8 Th 9 Th 10	L 3 L 2 S 4 S 5 Co	L 3 L 2 S 4 S 5 Co	Th 8 Th 9 Th 10	C 7 C 6 C 5 Th 4 Th 3 Th 2 L 5 L 4	Th 12 Th 11 L 1	Th 1 C 8 Th 7 Th 6 Th 5 S 3 S 2 S 1
VERTEBRAE	B 1 C 7 B 6 B 5 S 2 S 1	B 12 B 11 L 1	C 7 C 6 C 5 B 4 B 3 L 5 L 4	B 9 B 10	L 3 L 2 Co S 5 S 4 S 3	L 3 L 2 Co S 5 S 4 S 3	B 9 B 10	C 7 C 6 C 5 B 4 B 3 L 5 L 4	B 12 B 11 L 1	B 1 C 7 B 6 B 5 S 2 S 1
ORGANS	right heart	pancreas	lung	right liver	right kidney	left kidney	left liver	lung	spleen	left heart
YIN	11-13 h	9-11 h	3-5 h	1-3 h	17-19 h	17-19 h	1-3 h	3-5 h	9-11 h	11-13 h
	duodenum allergies	right stomach	colon	gall-bladder	right bladder urogenital region	left bladder urogenital region	left bile ducts	colon	left stomach	jejunum ileum allergies
YANG	13-15 h	7-9 h	5-7 h	23-1 h	15-17 h	15-17 h	23-1 h	5-7 h	7-9 h	13-15 h
ENDOCRINE GLANDS	anterior pituitary	parathyroid thyroid	thymus posterior pituitary	epiphysis	epiphysis	epiphysis	posterior pituitary	thymus	thyroid parathyroid	posterior pituitary
OTHER	CNS psyche	right mammary gland			back pain headache	back pain headache			left mammary gland	CNS psyche



OTHER	energy balance		right mammary gland					left mammary gland			energy balance	
ENDOCRINE GLANDS VASCULAR SYSTEM	peripheral nerves	arteries	veins	lymphatic vessels	gonads	adrenal gland	adrenal gland	gonads	lymphatic vessels	veins	arteries	peripheral nerves
YANG	11-13 h	3-5 h	9-11 h	1-3 h	17-19 h	17-19 h	1-3 h	9-11 h	3-5 h	11-13 h		
YIN	13-15 h	5-7 h	7-9 h	23-1 h	15-17 h	15-17 h	23-1 h	7-9 h	5-7 h	13-15 h		
	right heart cardiovascular system	right lung	pancreas	right liver	right kidney	left kidney	left liver	spleen	left lung	left heart cardiovascular system		
ORGANS	right ileum allergies	right colon ileosacral area	right stomach pylorus	gall-bladder	right bladder urogenital area	left bladder urogenital area	left bile ducts	left stomach	left colon	jejunum ileum allergies		
VERTEBRAE	C 7 B 1 B 5 B 6 S 1 S 2 hip	C 7 C 6 C 5 B 4 B 3 L 5 L 4	B 12 B 11 L 1	B 9 B 10	L 3 L 2 Co S 5 S 4 S 3	L 3 L 2 Co S 5 S 4 S 3	B 9 B 10	B 12 B 11 L 1	C 7 C 6 C 5 B 4 B 3 L 5 L 4	C 7 B 1 B 5 B 6 S 1 S 2 hip		
SPINAL CORD SEGMENTS	Th 1 C 8 Th 7 Th 6 Th 5 S 3 S 2 S 1	C 7 C 6 C 5 Th 4 Th 3 Th 2 L 5 L 4	Th 12 Th 11 L 1	Th 8 Th 9 Th 10	L 3 L 2 Co S 5 S 4	L 3 L 2 Co S 5 S 4	Th 8 Th 9 Th 10	Th 12 Th 11 L 1	C 7 C 6 C 5 Th 4 Th 3 Th 2 L 5 L 4	Th 1 C 8 Th 7 Th 6 Th 5 S 3 S 2 S 1		
JOINTS	shoulder - elbow		anterior knee	posterior knee		posterior knee		anterior knee	shoulder - elbow			
	hand ulnar foot plantar toes	hand radial foot big toe	jaw	hip	sacrum-coccyx foot	sacrum-coccyx foot	hip	jaw	hand radial foot big toe	hand ulnar foot plantar toes		
SENSORY ORGANS	ear/retina	ethmoidal cells/nose/olfactory sense	sinus maxillar/tongue/sense of taste	eye/visual sense	frontal sinus/nose/olfactory sense	frontal sinus/nose/olfactory sense	eye/visual sense	sinus maxillar/tongue/sense of taste	ethmoidal cells/nose/olfactory sense	ear/retina		

Dental correspondences after consideration of relations following Bahr-Schmid, Voll-Kramer and knowledge of TCM.

Meridian System for Self-Assessment

SENSORY ORGANS	inner ear	tongue/taste	nose/olfactory sense	eye	nose/olfactory sense/frontal sinus	nose/olfactory sense/frontal sinus	eye	nose/olfactory sense	tongue/taste	inner ear
JOINTS	shoulder elbow	jaw	shoulder elbow	rear knee	hip	sacrum-coccyx	rear knee	shoulder elbow	jaw	shoulder elbow
	hand ulnar foot plantar toes	anterior knee	hand radial foot big toe	foot	foot	foot	hand radial foot big toe	anterior knee	hand ulnar foot plantar toes	
SPINAL CORD SEGMENTS	Th 1 C8 Th 7 Th 6 Th 5 S 3 S 2 S 1	Th 12 Th 11 L 1	C 7 C 6 C 5 Th 4 Th 3 Th 2 L 5 L 4	Th 8 Th 9 Th 10	L 3 L 2 S 4 S 5 Co	L 3 L 2 S 4 S 5 Co	Th 8 Th 9 Th 10	C 7 C 6 C 5 Th 4 Th 3 Th 2 L 5 L 4	Th 12 Th 11 L 1	Th 1 C8 Th 7 Th 6 Th 5 S 3 S 2 S 1
VERTEBRAE	B 1 C 7 B 6 B 5 S 2 S 1	B 12 B 11 L 1	C 7 C 6 C 5 B 4 B 3 L 5 L 4	B 9 B 10	L 3 L 2 Co S 5 S 4 S 3	L 3 L 2 Co S 5 S 4 S 3	B 9 B 10	C 7 C 6 C 5 B 4 B 3 L 5 L 4	B 12 B 11 L 1	B 1 C 7 B 6 B 5 S 2 S 1
ORGANS	right heart	pancreas	lung	right liver	right kidney	left kidney	left liver	lung	spleen	left heart
YIN	11-13 h	9-11 h	3-5 h	1-3 h	17-19 h	17-19 h	1-3 h	3-5 h	9-11 h	11-13 h
	duodenum allergies	right stomach	colon	gall-bladder	right bladder urogenital region	left bladder urogenital region	left bile ducts	colon	left stomach	jejunum ileum allergies
YANG	13-15 h	7-9 h	5-7 h	23-1 h	15-17 h	15-17 h	23-1 h	5-7 h	7-9 h	13-15 h
ENDOCRINE GLANDS	anterior pituitary	parathyroid thyroid	thymus posterior pituitary	epiphysis	epiphysis	posterior pituitary	thymus	thyroid parathyroid	posterior pituitary	
OTHER	CNS psyche	right mammary gland			back pain headache	back pain headache			left mammary gland	CNS psyche

The diagram shows two rows of teeth. The top row contains teeth numbered 18 through 28, and the bottom row contains teeth numbered 48 through 38. Each tooth is a simple line drawing with its number written inside. The teeth are arranged in a slightly curved line, representing the dental arches.

OTHER	energy balance		right mammary gland					left mammary gland			energy balance
ENDOCRINE GLANDS VASCULAR SYSTEM	peripheral nerves	arteries veins	lymphatic vessels gonads	adrenal gland	adrenal gland	gonads	lymphatic vessels	veins arteries	peripheral nerves		
YANG	11-13 h	3-5 h	9-11 h	1-3 h	17-19 h	17-19 h	1-3 h	9-11 h	3-5 h	11-13 h	
YIN	13-15 h	5-7 h	7-9 h	23-1 h	15-17 h	15-17 h	23-1 h	7-9 h	5-7 h	13-15 h	
	right heart cardiovascular system	right lung	pancreas	right liver	right kidney	left kidney	left liver	spleen	left lung	left heart cardiovascular system	
ORGANS	right ileum allergies	right colon ileosacral area	right stomach pylorus	gall-bladder	right bladder urogenital area	left bladder urogenital area	left bile ducts	left stomach	left colon	jejunum ileum allergies	
VERTEBRAE	C 7 B 1 B 5 B 6 S 1 S 2 hip	C 7 C 6 C 5 B 4 B 3 L 5 L 4	B 12 B 11 L 1	B 9 B 10	L 3 L 2 Co S 5 S 4 S 3	L 3 L 2 Co S 5 S 4 S 3	B 9 B 10	B 12 B 11 L 1	C 7 C 6 C 5 B 4 B 3 L 5 L 4	C 7 B 1 B 5 B 6 S 1 S 2 hip	
SPINAL CORD SEGMENTS	Th 1 C8 Th 7 Th 6 Th 5 S 3 S 2 S 1	C 7 C 6 C 5 Th 4 Th 3 Th 2 L 5 L 4	Th 12 Th 11 L 1	Th 8 Th 9 Th 10	L 3 L 2 Co S 5 S 4	L 3 L 2 Co S 5 S 4	Th 8 Th 9 Th 10	Th 12 Th 11 L 1	C 7 C 6 C 5 Th 4 Th 3 Th 2 L 5 L 4	Th 1 C8 Th 7 Th 6 Th 5 S 3 S 2 S 1	
JOINTS	shoulder - elbow		anterior knee	posterior knee		posterior knee		anterior knee	shoulder - elbow		
	hand ulnar foot plantar toes	hand radial foot big toe	jaw	hip	sacrum-coccyx foot	sacrum-coccyx foot	hip	jaw	hand radial foot big toe	hand ulnar foot plantar toes	
SENSORY ORGANS	ear/retina	ethmoidal cells/nose/olfactory sense	sinus maxillaris/tongue/sense of taste	eye/visual sense	frontal sinus/nose/olfactory sense	frontal sinus/nose/olfactory sense	eye/visual sense	sinus maxillaris/tongue/sense of taste	ethmoidal cells/nose/olfactory sense	ear/retina	

Dental correspondences after consideration of relations following Bahr-Schmid, Voll-Kramer and knowledge of TCM.